 **TheGreenBow IPsec VPN Client**
Configuration Guide
Linksys WRV54G

WebSite: <http://www.thegreenbow.com>

Contact: support@thegreenbow.com

Table of contents

1	Introduction	0
1.1	Goal of this document	0
1.2	VPN Network topology	0
1.3	Linksys WRV54G Restrictions	0
2	Linksys WRV54G VPN configuration	0
3	TheGreenBow IPSec VPN Client configuration	0
3.1	VPN Client Phase 1 (IKE) Configuration	0
3.2	VPN Client Phase 2 (IPSec) Configuration	0
3.3	Open IPSec VPN tunnels	0
4	VPN IPSec Troubleshooting	0
4.1	« PAYLOAD MALFORMED » error	0
4.2	« INVALID COOKIE » error	0
4.3	« no keystate » error	0
4.4	« received remote ID other than expected » error	0
4.5	« NO PROPOSAL CHOSEN » error	0
4.6	« INVALID ID INFORMATION » error	0
4.7	I clicked on "Open tunnel", but nothing happens	0
4.8	The VPN tunnel is up but I can't ping !	0
5	Contacts	0

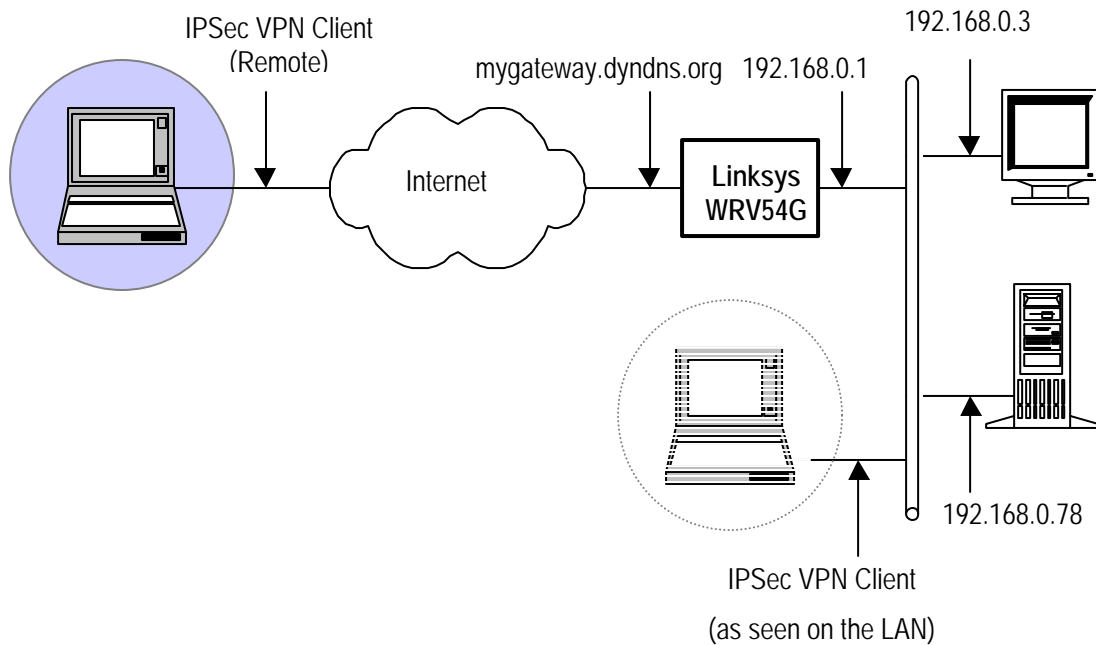
1 Introduction

1.1 Goal of this document

This configuration guide describes how to configure TheGreenBow IPsec VPN Client with a Linksys WRV54G router.

1.2 VPN Network topology

In our VPN network example (diagram hereafter), we will connect TheGreenBow IPsec VPN Client to the LAN behind the Linksys WRV54G router. The VPN client is connected to the Internet with a DSL connection or through a LAN. All the addresses in this document are given for example purpose.



1.3 Linksys WRV54G Restrictions

Depending on the firmware version, Linksys WRV54G may not support NAT-T. The IPsecVPN Client cannot connect if it stands on a LAN.

2 Linksys WRV54G VPN configuration

This section describes how to build an IPSec VPN configuration with your Linksys WRV54G VPN router.

Once connected to your VPN gateway, you must select "Security" and "VPN" tabs.



After defining "VPN tunnel" attributes and "VPN name", you must fill in Linksys LAN IP subnet address in "Local Secure group" section.

VPN Tunnel	
Select Tunnel Entry:	Tunnel 1 (VPNclient) <input type="button" value="v"/>
VPN Tunnel:	<input checked="" type="radio"/> Enabled <input type="radio"/> Disabled
VPN Gateway:	<input checked="" type="radio"/> Enabled <input type="radio"/> Disabled
Tunnel Name :	<input type="text" value="VPNclient"/>
Local Secure Group	
	Subnet <input type="button" value="v"/>
IP Address :	<input type="text" value="192"/> . <input type="text" value="168"/> . <input type="text" value="0"/> . <input type="text" value="0"/>
Mask :	<input type="text" value="255"/> . <input type="text" value="255"/> . <input type="text" value="255"/> . <input type="text" value="0"/>

You must select "Any" in "Remote Secure Group" and "Remote Security Gateway" sections because you are using an IPSec VPN client.

Make sure you remember IPSec / IKE encryption, authentication algorithms and pre shared key as you'll need them to configure TheGreenBow IPSec VPN Client side. For example, 3DES and SHA combination.

Remote Secure Group	Any <input type="button" value="v"/> (This Gateway accepts request from any IP Address!)
Remote Secure Gateway	Any <input type="button" value="v"/> (This Gateway accepts request from any IP Address!)
Key Management	Encryption : 3DES <input type="button" value="v"/> Authentication : SHA1 <input type="button" value="v"/> <hr/> Key Exchange Method : Auto(IKE) <input type="button" value="v"/> PFS : <input checked="" type="radio"/> Enabled <input type="radio"/> Disabled <input checked="" type="radio"/> Pre-Shared Key: abcdefgh <input type="radio"/> RSA Signature : Please enter RSA! Key Lifetime : 3600

When selecting "Advanced settings" on your Linksys WRV54G router, you will find this panel:

Tunnel 1

Phase 1:

Operation Mode: Main

Proposal:

Encryption: 3DES
 Authentication: SHA1
 Group: 1024-bit
 Key Life Time: 3600

(Note: Following three additional proposals are also proposed in Main mode: DES/MD5/768, 3DES/SHA/1024 and 3DES/MD5/1024.)

Phase 2:

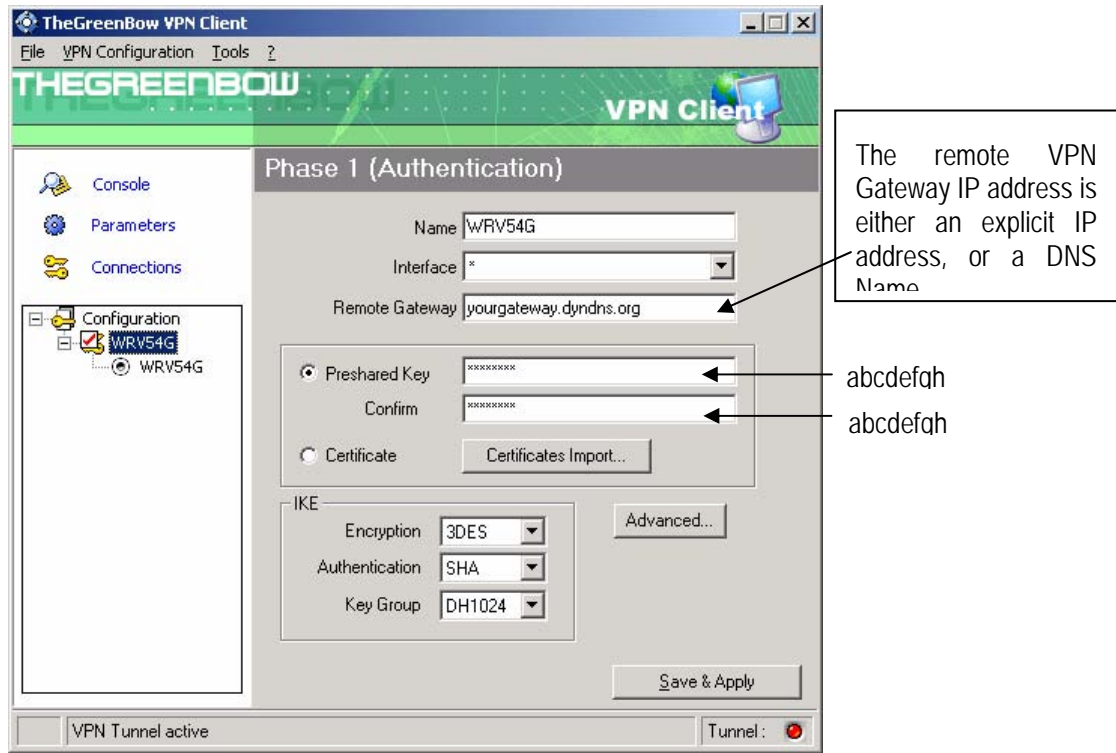
Proposal:

Encryption: 3DES
 Authentication: MD5
 PFS: Enabled
 Group: 1024-bit
 Key Life Time: 28000

Note these IPSec values. Make sure you remember IPSec / IKE Phase1 and Phase 2 attributes as you'll need them to configure TheGreenBow IPSec VPN Client side.

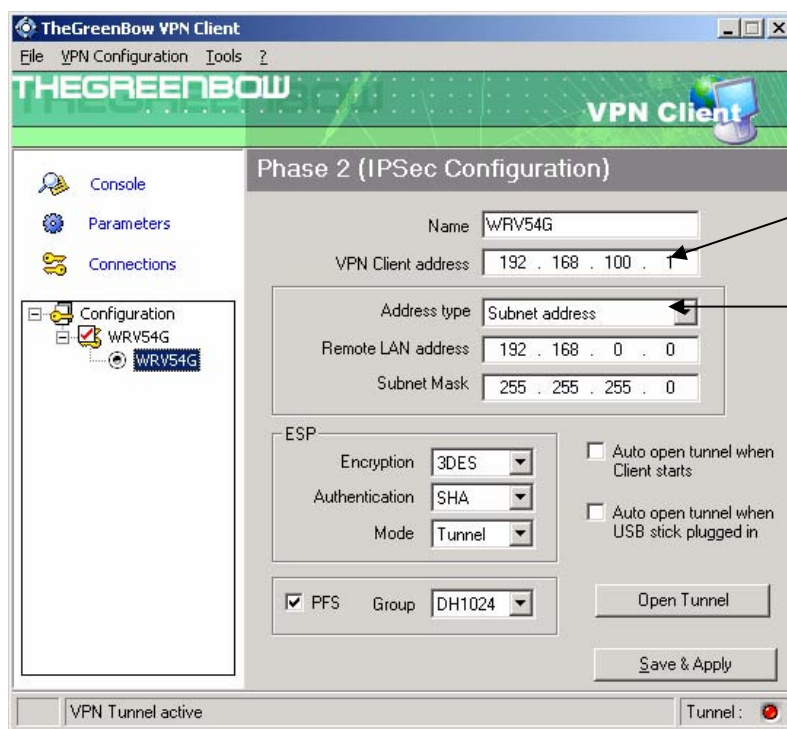
3 TheGreenBow IPsec VPN Client configuration

3.1 VPN Client Phase 1 (IKE) Configuration



Phase 1 configuration

3.2 VPN Client Phase 2 (IPSec) Configuration



You may define a static virtual IP address here.
If you use 0.0.0.0, you will have error "Local-ID" is missing. It does not prevent

Enter the IP address (and subnet mask) of the remote LAN.

Phase 2 Configuration

You may notice that we have selected SHA as authentication algorithm despite that fact MD5 algorithm is used for phase 2 in Linksys advanced settings. The real authentication algorithm used is defined in main configuration page of the Linksys router settings.

3.3 Open IPSec VPN tunnels

Once both Linksys WRV54G router and TheGreenBow IPSec VPN Client have been configured accordingly, you are ready to open VPN tunnels. First make sure you enable your firewall with IPSec traffic.

1. Click on "Save & Apply" to take into account all modifications we've made on your VPN Client configuration
2. Click on "Open Tunnel", or generate traffic that will automatically open a secure IPSec VPN Tunnel (e.g. ping, IE browser)
3. Select "Connections" to see opened VPN Tunnels
4. Select "Console" if you want to access to the IPSec VPN logs and adjust filters to display less IPSec messaging.

4 VPN IPSec Troubleshooting

4.1 « PAYLOAD MALFORMED » error

```

114920 Default (SA WRV54G-P1) SEND phase 1 Main Mode [SA][VID]
114920 Default (SA WRV54G-P1) RECV phase 1 Main Mode [NOTIFY]
114920 Default exchange_run: exchange_validate failed
114920 Default dropped message from 195.100.205.114 port 500 due to notification
type PAYLOAD_MALFORMED
114920 Default SEND Informational [NOTIFY] with PAYLOAD_MALFORMED error

```

If you have an « PAYLOAD MALFORMED » error you might have a wrong Phase 1 [SA], check if the encryption algorithms are the same on each side of the VPN tunnel.

4.2 « INVALID COOKIE » error

```

115933 Default message_rcv: invalid cookie(s) 5918ca0c2634288f 7364e3e486e49105
115933 Default dropped message from 195.100.205.114 port 500 due to notification
type INVALID_COOKIE
115933 Default SEND Informational [NOTIFY] with INVALID_COOKIE error

```

If you have an « INVALID COOKIE » error, it means that one of the endpoint is using a SA that is no more in use. Reset the VPN connection on each side.

4.3 « no keystate » error

```

115315 Default (SA WRV54G-P1) SEND phase 1 Main Mode [SA][VID]
115317 Default (SA WRV54G-P1) RECV phase 1 Main Mode [SA][VID]
115317 Default (SA WRV54G-P1) SEND phase 1 Main Mode [KEY][NONCE]
115319 Default (SA WRV54G-P1) RECV phase 1 Main Mode [KEY][NONCE]
115319 Default (SA WRV54G-P1) SEND phase 1 Main Mode [ID][HASH][NOTIFY]
115319 Default ipsec_get_keystate: no keystate in ISAKMP SA 00B57C50

```

Check if the preshared key is correct or if the local ID is correct (see « Advanced » button). You should have more information in the remote endpoint logs.

4.4 « received remote ID other than expected » error

```

120348 Default (SA WRV54G-P1) SEND phase 1 Main Mode [SA][VID]
120349 Default (SA WRV54G-P1) RECV phase 1 Main Mode [SA][VID]
120349 Default (SA WRV54G-P1) SEND phase 1 Main Mode [KEY][NONCE]
120351 Default (SA WRV54G-P1) RECV phase 1 Main Mode [KEY][NONCE]
120351 Default (SA WRV54G-P1) SEND phase 1 Main Mode [ID][HASH][NOTIFY]
120351 Default (SA WRV54G-P1) RECV phase 1 Main Mode [ID][HASH][NOTIFY]
120351 Default ike_phase_1_rcv_ID: received remote ID other than expected
support@thegreenbow.fr

```

The « Remote ID » value (see « Advanced » Button) does not match what the remote endpoint is expected.

4.5 « NO PROPOSAL CHOSEN » error

```

115911 Default (SA WRV54G-P1) SEND phase 1 Main Mode [SA][VID]
115913 Default (SA WRV54G-P1) RECV phase 1 Main Mode [SA][VID]
115913 Default (SA WRV54G-P1) SEND phase 1 Main Mode [KEY][NONCE]
115915 Default (SA WRV54G-P1) RECV phase 1 Main Mode [KEY][NONCE]
115915 Default (SA WRV54G-P1) SEND phase 1 Main Mode [ID][HASH][NOTIFY]
115915 Default (SA WRV54G-P1) RECV phase 1 Main Mode [ID][HASH][NOTIFY]
115915 Default phase 1 done: initiator id c364cd70: 195.100.205.112, responder id
c364cd72: 195.100.205.114, src: 195.100.205.112 dst: 195.100.205.114
115915 Default (SA WRV54G-WRV54G-P2) SEND phase 2 Quick Mode
[SA][KEY][ID][HASH][NONCE]
115915 Default RECV Informational [HASH][NOTIFY] with NO_PROPOSAL_CHOSEN error
115915 Default RECV Informational [HASH][DEL]
115915 Default WRV54G-P1 deleted
    
```

If you have an « NO PROPOSAL CHOSEN » error, check that the « Phase 2 » encryption algorithms are the same on each side of the VPN Tunnel.

Check « Phase 1 » algorithms if you have this:

```

115911 Default (SA WRV54G-P1) SEND phase 1 Main Mode [SA][VID]
115911 Default RECV Informational [NOTIFY] with NO_PROPOSAL_CHOSEN error
    
```

4.6 « INVALID ID INFORMATION » error

```

122623 Default (SA WRV54G-P1) SEND phase 1 Main Mode [SA][VID]
122625 Default (SA WRV54G-P1) RECV phase 1 Main Mode [SA][VID]
122625 Default (SA WRV54G-P1) SEND phase 1 Main Mode [KEY][NONCE]
122626 Default (SA WRV54G-P1) RECV phase 1 Main Mode [KEY][NONCE]
122626 Default (SA WRV54G-P1) SEND phase 1 Main Mode [ID][HASH][NOTIFY]
122626 Default (SA WRV54G-P1) RECV phase 1 Main Mode [ID][HASH][NOTIFY]
122626 Default phase 1 done: initiator id c364cd70: 195.100.205.112, responder id
c364cd72: 195.100.205.114, src: 195.100.205.112 dst: 195.100.205.114
122626 Default (SA WRV54G-WRV54G-P2) SEND phase 2 Quick Mode
[SA][KEY][ID][HASH][NONCE]
122626 Default RECV Informational [HASH][NOTIFY] with INVALID_ID_INFORMATION error
122626 Default RECV Informational [HASH][DEL]
122626 Default WRV54G-P1 deleted
    
```

If you have an « INVALID ID INFORMATION » error, check if « Phase 2 » ID (local address and network address) is correct and match what is expected by the remote endpoint.

Check also ID type ("Subnet address" and "Single address"). If network mask is not check, you are using a IPV4_ADDR type (and not a IPV4_SUBNET type).

4.7 I clicked on "Open tunnel", but nothing happens.

Read logs of each VPN tunnel endpoint. IKE requests can be dropped by firewalls. An IPSec Client uses UDP port 500 and protocol ESP (protocol 50).

4.8 The VPN tunnel is up but I can't ping !

If the VPN tunnel is up, but you still cannot ping the remote LAN, here are a few guidelines:

- Check Phase 2 settings: VPN Client address and Remote LAN address. Usually, VPN Client IP address should not belong to the remote LAN subnet
- Once VPN tunnel is up, packets are sent with ESP protocol. This protocol can be blocked by firewall. Check that every device between the client and the VPN server does accept ESP
- Check your VPN server logs. Packets can be dropped by one of its firewall rules.
- Check your ISP support ESP

Doc.Ref	tgvpn_ug_LinksysWRV54G_en
Doc.version	2.0 – Feb.2005
VPN version	2.5x

- If you still cannot ping, follow ICMP traffic on VPN server LAN interface and on LAN computer interface (with Ethereal for example). You will have an indication that encryption works.
- Check the “default gateway” value in VPN Server LAN. A target on your remote LAN can receive pings but does not answer because there is a no “Default gateway” setting.
- You cannot access to the computers in the LAN by their name. You must specify their IP address inside the LAN.
- We recommend you to install ethereal (<http://www.ethereal.com>) on one of your target computer. You can check that your pings arrive inside the LAN.

5 Contacts

News and updates on TheGreenBow web site : <http://www.thegreenbow.com>

Technical support by email at support@thegreenbow.com

Sales contacts at +33 1 43 12 39 37 ou by email at info@thegreenbow.com