

1. PC-home (with greenbow VPN client) → Internet → (PC-work) LF DEVICE

Greenbow VPN client:

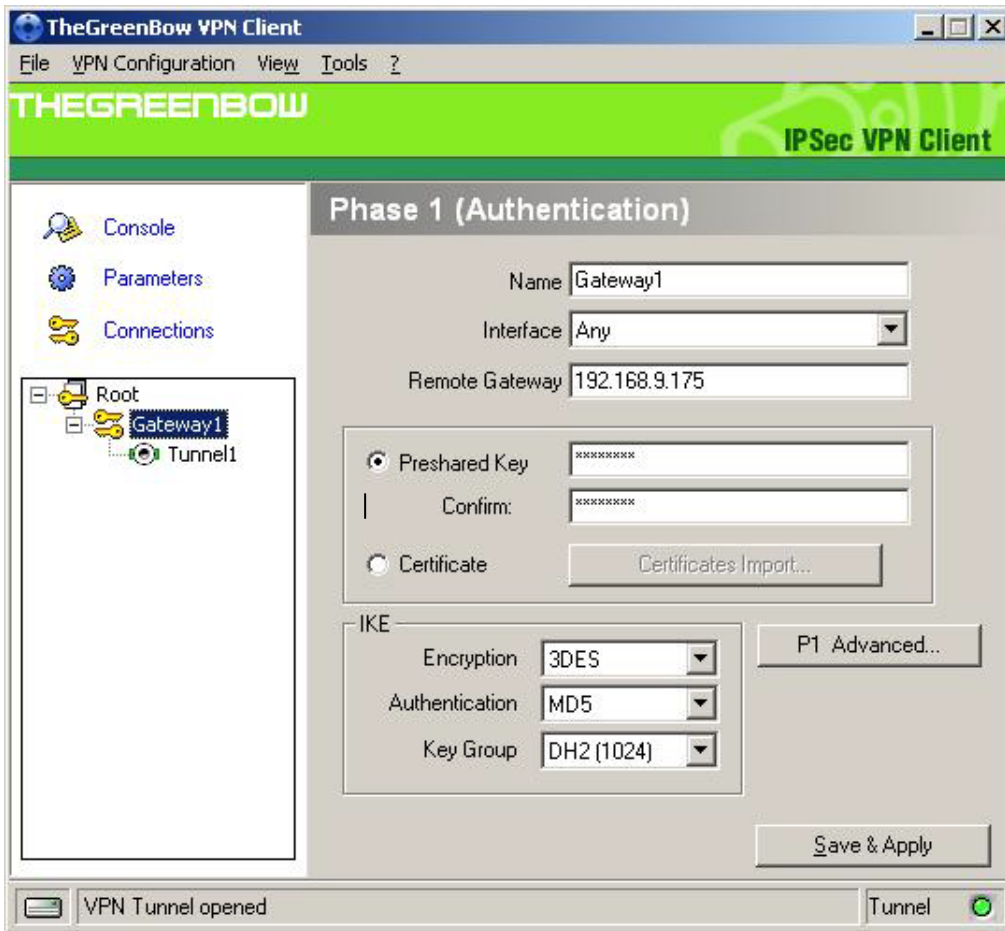



Figure 1

- ※ Remote gateway IP (192.168.9.175) is LF DEVICE WAN IP.
- ※ Click P1 Advanced button.

Phase1 Advanced [X]



Advanced features

Config Mode Redund.GW

Aggressive Mode NAT-T

X-Auth

X-Auth Popup Login

Hybrid Mode Password

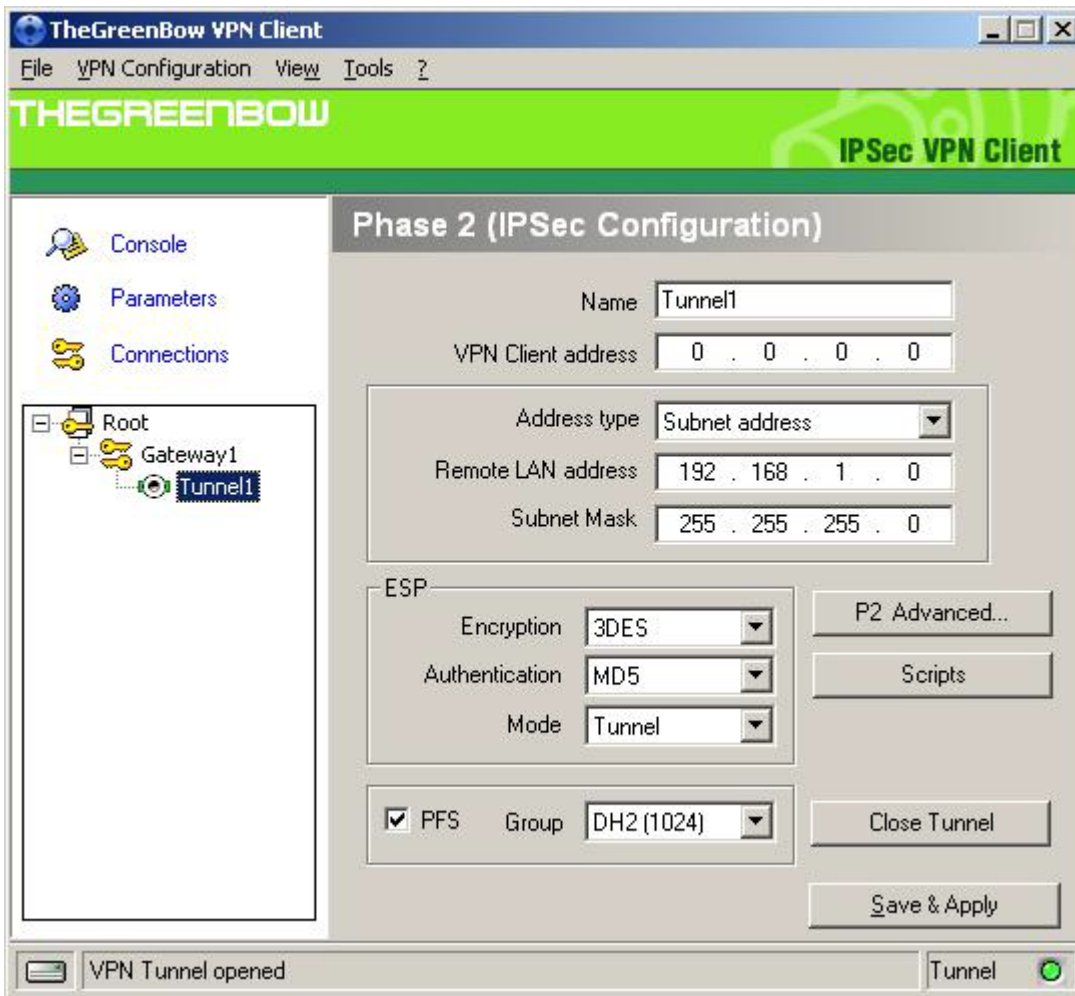
Local and Remote ID

Choose the type of ID: Set the value for the ID:

Local ID

Remote ID

※ Fill-out your local ID: okan@eo-link.de



Press open tunnel button. If the “Tunnel” green light is on, it mean the greenbow VPN client is connected with LF DEVICE

Setup Piotech's VPN Device :

Phase1:

Global List (Phase 1)					
WAN	State	ISAKmp Port	DH Group	Encryption Method	Authentication Method
WAN 1	Enabled	500	DH Group 2 (1024-bit)	3DES	MD5
WAN 2	Disabled	500	DH Group 2 (1024-bit)	3DES	MD5
WAN 3	Disabled	500	DH Group 2 (1024-bit)	3DES	MD5

Global Parameters	WAN 1
Enable Setting	<input checked="" type="checkbox"/>
ISAKmp Port	500
Phase 1 DH Group	DH Group 2 (1024-bit)
Phase 1 Encryption Method	3DES
Phase 1 Authentication Method	MD5
Phase 1 SA Lifetime	3600 Seconds
Retry Counter	5
Retry Interval	10 Seconds
Maxtime to complete Phase 1	180 Seconds
Maxtime to complete Phase 2	3600 Seconds
Count Per Send	1
NAT Traversal Port	4500

Log Level
Log Level

Log Level: Debug

Phase 2:

IPSec Policy Setup

Policy Entry		Traffic Binding		Local Identity Option	
Name	State	Interface	Session	Type	
server	<input checked="" type="checkbox"/> Enabled	WAN 1	Session 1	IP Address	

Traffic Selector				
Protocol Type	Any			
Local Security Network	Local Type	IP Address	Subnet Mask	Port Range
	Subnet	192.168.1.0	255.255.255.0	0 ~ 0
Remote Security Network	Remote Type			
	Any			
Remote Security Gateway	Identity Type			
	Distinguished ID	okan@eo-link.de		

Security Level	
Encapsulation Format	ESP
Encryption Method	3DES
Authentication Method	MD5

Security Level	
Encapsulation Format	ESP
Encryption Method	3DES
Authentication Method	MD5

Key Management	
Key Type	Autokey (IKE)
Phase 1 Negotiation	Aggressive Mode
Perfect Forward Secrecy	DH Group 2 (1024-bit)
Preshared Key	test1234 Characters / Hex: 0x
Key Lifetime	In Time <input type="text" value="3600"/> Seconds Note : 0 for no expiry
	In Volume <input type="text" value="0"/> Kbytes

Action	
Connect	Flush Tunnel Reload Policy Tunnel Status .. Set Options ..

Add	Delete	Update	Refresh	Move Up	Move Down
---------------------	------------------------	------------------------	-------------------------	-------------------------	---------------------------

Tunnel List							
State	Name	Security Gateway	Remote Network	Security Level	Key Type	Interface	Negotiation Status
Enabled	server	okan@eo-link.de	Any	3DES/MD5	Autokey (IKE)	WAN 1 Connected	Responder (Quick) : established

- ※ Remote Security Network: select “ANY”
- ※ Remote Security Gateway select “Distinguished ID” It is your greenbow VPN client ID(okan@eo-link.de)